



# THE CHRONICLE

**Coach House Museum**

Newsletter of The Coach House Museum

**May 2025**

In association with Fgilding & Districts Community Archive



The sun shined brightly and so many amazing people from all over the lower north island came to display and demonstrate their talents.



**Old Skills in Action 2025**



No 'Blast from the Past' this month, just lots more photos from Skills Day.



## EARLY NEWSPAPERS

The first newspaper in Feilding was set up by George Capper and David Curle in 1879 and, in 1882, after the new owners, George Kirton and Augustus Robert Curtis took charge, the name was changed to The Feilding Star. Before newspapers, telephones, computers and other technology that at one time had seemed to be totally science fiction, news was usually spread by word of mouth. The Manawatu Daily Times was the first newspaper in the area and was established by Joseph Poulter Leary and John Law Kirkbride in October 1875. Five months earlier, they had started publishing the Rangitikei Advocate.

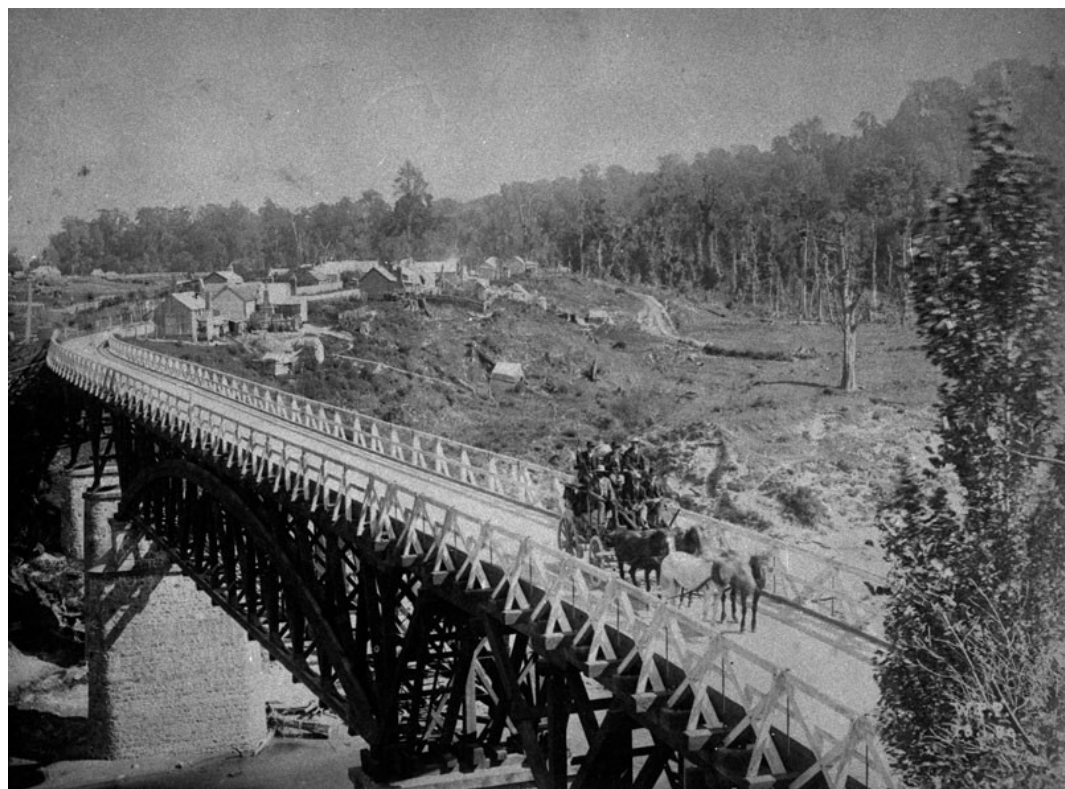


**The Rangitikei Advocate**  
MANAWATU ARGUS.

**The Manawatu Times.**  
**The Feilding Star.**  
*Kiwitea & Oroua Counties Gazette.*



A historical settlement near the bridge on the Woodville side of the Manawātū Gorge (which no longer exists), looking back towards Woodville. The photograph is taken after the construction of the telegraph line in 1879-1880. A coach and team of horses are travelling over the bridge to Palmerston North. Palmerston North City Library ref. ID 2007N\_Go5\_EPN\_0268



## FROM 'CHARLOTTE'S STORY ABOARD ARETHUSA 1879 CONTINUED

**Friday 3<sup>rd</sup> October.** Fresh breeze springing up. Thunder, lightning, rain again, what a night. We know now what it is to have a storm at sea. We can hardly lay in our beds and are obliged to hold on to the woodwork. The ship rolls fearfully. The tins and pannikins and pails are rolling all over the place and the sea comes over the deck and down upon us dreadfully.

**Saturday.** Still rough and stormy. Charlie's wife (referred to as Eliza or Lizzie) keeps fainting away. She is very weak and low. She cannot eat the food they give us and suckling the baby...she can hardly keep up. I am obliged to nurse the baby entirely and feed him with a bottle and the little girl is continually crying for grandma, but they have not used us well at all since we started but I must try and return good for evil. She has got thick with some of the voyagers and turns her nose up and me and father- but the poor children shall not suffer through them.

**Sunday October 5<sup>th</sup>** Another Sabbath on the sea but I begin to feel quite weary of the journey. You may depend if ever I get safe on the land again, I shall not venture on the sea to return to England.... I have had two days washing for us all this week – You would laugh to see them pinned on a line and drawn up. We often lose some of our clothes. I brought my irons with me and the black cook makes them hot for me, so I manage to starch and iron fine. We passed two homeward bound ships today and saluted them. I expect that will be in your English paper.



Limited tickets  
available for the  
High Tea

**MOTHER'S DAY**  
*High Tea*

**COACH HOUSE MUSEUM**  
**121 -127 SOUTH ST FEILDING**

*Spot Prizes + Entertainment*  
*by Emma Carter*

**SUNDAY 11 MAY - 2PM**

*Tickets available at the*  
*Coach House Museum*

**\$25**  
**TICKET**





**Highlight of my day! Blade shearing tutorial from Allan. The team were less than impressed with my skills so I think I'll keep my day job ~ Piki ~**



**Vintage Camera display—Eris, Feilding & District Art Society**



**So many fabulous photos from  
*Brass & Glass Photographic  
Alchemy—Wairarapa***





## The Wheelwright Hub Ltd Greg & Ali Lang

This is always a popular demonstration and we are very grateful that Greg and Ali were able to join us again. *I was keen to have a go at whittling a spoke but figured a wonky wheel wasn't going to do them any good.* Greg did several demonstrations of tying wheels and spoke about their exciting



changes and goals for the future. They have set up **The Wheelwright Hub Heritage Trust** to enable them to teach the skills of 'wheelwrighting' so the craft is kept alive. They are also looking at the possibility of taking on an apprentice and further promote 'tour groups' as well as offering courses in the trade. Further information can be found at [www.wheelwrighthub.co.nz](http://www.wheelwrighthub.co.nz)













## COMING SOON

**Calling all budding writers—We have our very own international selling author Jill Darragh running a Historic Romance Writing Workshop. Jill is giving her time and expertise as a fundraiser for the Coach House.**

**More information will be coming out soon. There will be limited spaces available. \$20 per person, includes afternoon tea.**

**The Te Ahu a Turanga – Manawatū Tararua Highway is a 11.5-kilometre-long, four-lane highway is due to open June 2025**



Manawatu Gorge, circa 1890, Manawatū, by Burton Brothers. Te Papa (O.006847/01), <https://collections.tepapa.govt.nz/object/348198>

The second bridge at the Ashhurst end in 1909 – Palmerston North City Library, <https://manawatuheritage.pncc.govt.nz/item/8bbca654-983b-47bb-91a4-8ee600b755ce>

Construction on the road through the Manawatu Gorge started in 1871. There were no bridges either end to begin with and travelers were ferried over the Manawatu river by punt or canoe. 150 years ago on 31 May 1875, a road/rail bridge on the Woodville end was officially opened. But it wasn't for another eleven years before a bridge was built at the Ashhurst side. This bridge however was washed away by a flood and replaced by a much wider concrete bridge in 1909.

